



PRODUCT CATALOGUE



Australian Distributor for the
Renowned Magswitch Range!

1800 466 246
www.msamagnetics.com.au
YOUR SOURCE FOR FORCE



TABLE OF CONTENTS

Contents

Magswitch Range 4 - 11

Magswitch 90 Degree Angles	5
Magswitch Boomer Angles	5
Magswitch Ground Clamps	6
Magswitch MagDrill Disrupter 30	6
Magswitch Mag-Utility Hooks	7
Magswitch Pivot Angles	7
Magswitch MagMounts	8
Magswitch MagSquares	9
Magswitch Mini Angles	10
Magswitch MagJigs	11

Magswitch No-touch Tool Range 12 - 15

Magswitch Hand Lifters	13
Magswitch MagDolly	14
Magswitch Extenda-Lifts	14
Magswitch MagReach 400	15

MSA and Magswitch Lifting Magnets 16 - 21

MSA Pro-Lift Lifting Magnets	17
Magswitch MLAY Lifting Magnets	18-19
Magswitch CE Magnetic Lifters	20-21

MSA Cable Safety Range 22 - 23

MSA FRAS Cable-Mate Magnetic Lead Holder	23
MSA Cable-Mate Magnetic Lead Holder	23
MSA Cable-Buddy Magnetic Lead Holder	23
MSA Powr-Safe Magnetic Lead Holder	23

MSA Magnetic Workshop Clean-Up Range 24 - 27

MSA Magnetic Workshop Wands	25
MSA Magnetic Super Sweepers	26
MSA Magnetic Forklift Sweepers	27

MSA Welding Torch Holders 28 - 29

MSA Mig-Mate Welding Torch Holder	29
MSA Tig-Mate Welding Torch Holder	29

MSA Grip Grab Pot Magnets 30 - 33

A-Series – CSK Centre Hole	31
B-Series – Straight Hole	31
C-Series – Male Thread	32
D-Series – Female Threaded Boss	32
E-Series – Complete with Hook	33



MAGSWITCH **RANGE**

Magswitch 90 Degree Angles

90° ANGLE 165

CODE: 8100548



Max Breakaway:	68 kg
Full Saturation Thickness:	6 mm
2:1 Shear Working Load:	8.4 kg
Net Weight:	0.8 kg
Overall Height:	205 mm
Magnetic Pole Footprint:	48 x 31 mm

90° ANGLE 400

CODE: 8100454



Max Breakaway:	181 kg
Full Saturation Thickness:	3.43 mm
2:1 Shear Working Load:	9 kg
Net Weight:	2.8 kg
Overall Height:	181 mm
Magnetic Pole Footprint:	64 x 41.26 mm

90° ANGLE 600

CODE: 8100495



Max Breakaway:	272 kg
Full Saturation Thickness:	10 mm
2:1 Shear Working Load:	27 kg
Net Weight:	3.7 kg
Overall Height:	272 mm
Magnetic Pole Footprint:	75 x 51.5 mm

Magswitch Boomer Angles

BOOMERANGLE 150

CODE: 8100091



Max Breakaway:	68 kg
Full Saturation Thickness:	6 mm
2:1 Shear Working Load:	6 kg
Net Weight:	1.3 kg
Overall Height:	68 mm
Magnetic Pole Footprint:	40 x 40 mm

BOOMERANGLE 400

CODE: 8100453



Max Breakaway:	181 kg
Full Saturation Thickness:	3.43 mm
2:1 Shear Working Load:	9 kg
Net Weight:	3.0 kg
Overall Height:	181 mm
Magnetic Pole Footprint:	64 x 41.26 mm

BOOMERANGLE 600

CODE: 8100090



Max Breakaway:	272 kg
Full Saturation Thickness:	10 mm
2:1 Shear Working Load:	27 kg
Net Weight:	4.4 kg
Overall Height:	272 mm
Magnetic Pole Footprint:	75 x 51.5 mm

Magswitch Ground Clamps

300 AMP FINNED MAGNETIC GROUND CLAMP

CODE: 8100746

Magnet Strength:	40 kg
Net Weight:	0.4 kg
Overall Height:	57.3 mm
Magnetic Pole Footprint:	40 Ø mm



600 AMP FINNED MAGNETIC GROUND CLAMP

CODE: 8100747

Magnet Strength:	89 kg
Net Weight:	0.8 kg
Overall Height:	103 mm
Magnetic Pole Footprint:	69 Ø mm



800 AMP FINNED MAGNETIC GROUND CLAMP

CODE: 8100552

Magnet Strength:	136 kg
Net Weight:	1.6 kg
Overall Height:	74 mm
Magnetic Pole Footprint:	89 Ø mm



Magswitch MagDrill Disruptor 30

MAGDRILL DISRUPTOR 30

CODE: 8100920

Magnet strength:	532 kg
Tip force (1/4 inch):	242.63 kgf
Tip force (1/2 inch):	271.97 kgf
Weight:	11.0 kg
Height:	416 mm
Width:	185 mm
Length:	275 mm



Magswitch Mag-Utility Hooks

MAG-UTILITY HOOK 25

CODE: 8100012



Max Breakaway:	11 kg
Full Saturation Thickness:	3.05 mm
2:1 Shear Working Load:	9 kg
Net Weight:	0.2 kg
Overall Height:	89 mm
Magnetic Pole Footprint:	Ø 40 mm

MAG-UTILITY HOOK 40

CODE: 8100006



Max Breakaway:	18 kg
Full Saturation Thickness:	25.4 mm
2:1 Shear Working Load:	12.5 kg
Net Weight:	0.8 kg
Overall Height:	103 mm
Magnetic Pole Footprint:	Ø 69 mm

Magswitch Pivot Angles

PIVOT ANGLE 150 MINI

CODE: 81001269



Max Breakaway:	83 kg
Full Saturation Thickness:	4.8 mm
Max Safe Shear:	11 kg
Net Weight:	1 kg
Overall Height:	53.4 mm
Magnetic Pole Footprint:	26.4 x 54 mm

PIVOT ANGLE 150 MAX

CODE: 81001215



Max Breakaway:	83 kg
Full Saturation Thickness:	4.8 mm
Max Safe Shear:	11 kg
Net Weight:	1.5 kg
Overall Height:	53.4 mm
Magnetic Pole Footprint:	26.4 x 54 mm

Magswitch MagMounts

MAGMOUNT 150

CODE: 8100579



Max Breakaway:	68 kg
Full Saturation Thickness:	2.5 mm
2:1 Shear Working Load:	4.8 kg
Net Weight:	0.4 kg
Overall Height:	32 mm
Magnetic Pole Footprint:	40 x 31.2 mm

MAGMOUNT 235

CODE: 8100451



Max Breakaway:	106 kg
Full Saturation Thickness:	4.75 mm
Net Weight:	0.5 kg
Overall Height:	98 mm
Magnetic Pole Footprint:	56 x 42 mm

MAGMOUNT 300

CODE: 8100595



Max Breakaway:	111 kg
Full Saturation Thickness:	4.75 mm
Net Weight:	0.5 kg
Overall Height:	43.8 mm
Magnetic Pole Footprint:	71.8 x 51.5 mm

MAGMOUNT 400

CODE: 8100523



Max Breakaway:	182 kg
Full Saturation Thickness:	6 mm
Net Weight:	0.5 kg
Overall Height:	65 mm
Magnetic Pole Footprint:	64 x 41.26 mm

MAGMOUNT 600

CODE: 8100580



Max Breakaway:	272 kg
Full Saturation Thickness:	10 mm
2:1 Shear Working Load:	27 kg
Net Weight:	1.5 kg
Overall Height:	72 mm
Magnetic Pole Footprint:	75 x 51.5 mm

Magswitch MagSquares

MAGSQUARE 165

CODE: 8100494



Max Breakaway:	68 kg
Full Saturation Thickness:	6.35 mm
2:1 Shear Working Load:	8.4 kg
Net Weight:	0.23 kg
Overall Height:	64.25 mm
Magnetic Pole Footprint:	48 x 31 mm

MAGSQUARE 400

CODE: 8100238



Max Breakaway:	181 kg
Full Saturation Thickness:	6 mm
2:1 Shear Working Load:	18 kg
Net Weight:	0.91 kg
Overall Height:	90 mm
Magnetic Pole Footprint:	64 x 41.26 mm

MAGSQUARE 600

CODE: 8100106



Max Breakaway:	272 kg
Full Saturation Thickness:	10 mm
2:1 Shear Working Load:	27 kg
Net Weight:	1.36 kg
Overall Height:	106 mm
Magnetic Pole Footprint:	75 x 51.5 mm

MAGSQUARE 1000

CODE: 8100099



Max Breakaway:	454 kg
Full Saturation Thickness:	13 mm
2:1 Shear Working Load:	67 kg
Net Weight:	3.36 kg
Overall Height:	147 mm
Magnetic Pole Footprint:	72 x 108 mm

Magswitch Mini Angles

MINI ANGLE

CODE: 8100352



Max Breakaway:	34.4 kg
Full Saturation Thickness:	3.05 mm
2:1 Shear Working Load:	2.7 kg
Net Weight:	0.18 kg
Overall Height:	55 mm
Magnetic Pole Footprint:	59.5 x 32 mm

MINI MULTI ANGLE

CODE: 8100350



Max Breakaway:	40 kg
2:1 Shear Working Load:	2.7 kg
Net Weight:	0.2 kg
Overall Height:	65 mm
Magnetic Pole Footprint:	32 x 72 mm

MINI MULTI ANGLE WITH 300 AMP GROUND CLAMP

CODE: 8100351



Max Breakaway:	67 kg
Full Saturation Thickness:	3.05 mm
2:1 Shear Working Load:	2.7 kg
Net Weight:	0.4 kg
Overall Height:	87 mm
Magnetic Pole Footprint:	90.5 x 44 mm

MINI MULTI ANGLE 400

CODE: 8100438



Max Breakaway:	181 kg
Full Saturation Thickness:	3.43 mm
2:1 Shear Working Load:	9 kg
Net Weight:	1.2 kg
Overall Height:	95 mm
Magnetic Pole Footprint:	64 x 41.26 mm

Magswitch MagJigs

MAGJIG 60

CODE: 8100818



Max Breakaway:	27 kg
2:1 Shear Working Load:	7 kg
Net Weight:	0.1 kg
Overall Height:	44.6 mm
Magnetic Pole Footprint:	56 mm x 16 mm

MAGJIG 95

CODE: 8110004



Max Breakaway:	43 kg
2:1 Shear Working Load:	4 kg
Net Weight:	0.1 kg
Overall Height:	46.62 mm
Magnetic Pole Footprint:	30 mm x 21 mm

MAGJIG 150

CODE: 8110005



Max Breakaway:	60.3 kg
2:1 Shear Working Load:	6.8 kg
Net Weight:	0.2 kg
Overall Height:	52.12 mm
Magnetic Pole Footprint:	40 mm x 31 mm

MAGJIG 235

CODE: 8100377



Max Breakaway:	106 kg
Full Saturation Thickness:	6 mm
2:1 Shear Working Load:	20 kg
Net Weight:	0.45 kg
Overall Height:	78 mm
Magnetic Pole Footprint:	56 mm x 41.25 mm

MAGJIG 60 KEYCHAIN

CODE: 8100514



Max Breakaway:	27 kg
2:1 Shear Working Load:	7 kg
Net Weight:	0.1 kg
Overall Height:	44.6 mm
Magnetic Pole Footprint:	56 mm x 16 mm



MAGSWITCH **NO-TOUCH TOOL RANGE**

Magswitch Hand Lifters

HAND LIFTER 60-M (MANUAL)

CODE: 8100359



Max Breakaway:	106 kg
Full Saturation Thickness:	6 mm
2:1 Shear Working Load:	20 kg
Net Weight:	0.6 kg
Overall Height:	140 mm
Magnetic Pole Footprint:	56 x 41.25 mm

FIXED SINGLE HAND LIFTER 235

CODE: 8100795



Max Breakaway:	106 kg
Full Saturation Thickness:	4.75 mm
Net Weight:	0.7 kg
Overall Height:	105.1 mm
Magnetic Pole Footprint:	56 x 42 mm

FIXED SINGLE HAND LIFTER 400

CODE: 8100810



Max Breakaway:	177 kg
Full Saturation Thickness:	9.5 mm
Net Weight:	1.1 kg
Overall Height:	127 mm
Magnetic Pole Footprint:	67 x 42 mm

HAND LIFTER 60-CE (CORDLESS ELECTRIC) W/ HOLSTER

CODE: 8800487



Max Breakaway:	106 kg
Full Saturation Thickness:	6 mm
2:1 Shear Working Load:	20 kg
Net Weight:	1.1 kg
Overall Height:	106 mm
Magnetic Pole Footprint:	56 x 42 mm

FIXED DUAL HAND LIFTER 235

CODE: 8100821



Max Breakaway:	213 kg
Full Saturation Thickness:	4.75 mm
Net Weight:	1.9 kg
Overall Height:	111.4 mm
Magnetic Pole Footprint:	2 x (56 x 42) mm

FIXED DUAL HAND LIFTER 400

CODE: 8100822



Max Breakaway:	363 kg
Full Saturation Thickness:	9.5 mm
Net Weight:	2.7 kg
Overall Height:	133.3 mm
Magnetic Pole Footprint:	2 x (67 x 42) mm

Magswitch Mag Dolly

MAG DOLLY
CODE: 8100433

Net Weight:	9.4 kg
Overall Height:	917 mm



Magswitch Extenda-Lifts



EXTENDA-LIFT 600
CODE: 8100025

Max Breakaway:	272 kg
Full Saturation Thickness:	50.8 mm
2:1 Shear Working Load:	20.5 kg
Net Weight:	2.4 kg
Overall Height:	724 mm
Magnetic Pole Footprint:	116.8 x 66 mm



EXTENDA-LIFT 1000
CODE: 8130177

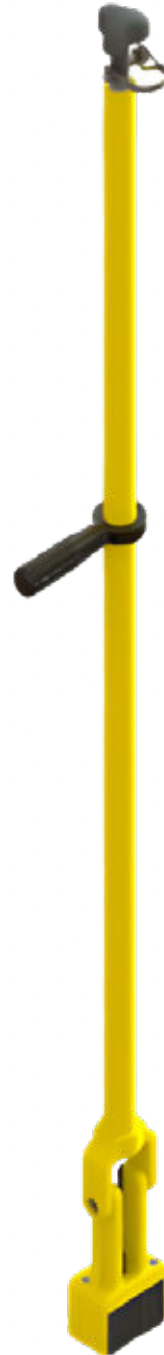
Max Breakaway:	454 kg
Full Saturation Thickness:	13 mm
2:1 Shear Working Load:	67 kg
Net Weight:	4.4 kg
Overall Height:	724 mm
Magnetic Pole Footprint:	72 x 108 mm

Magswitch MagReach

MAGREACH 400

CODE: 81001594

Max Breakaway:	173 kg
Full Saturation Thickness:	9.5 mm
Max Shear:	35 kg
Overall Adjustable Height:	160 – 2183 mm
Net Weight:	3 kg





MSA MAGNETICS



MSA AND MAGSWITCH LIFTING MAGNETS

MSA Pro-Lift Lifting Magnets

PRO-LIFT LIFTING MAGNET 300KG

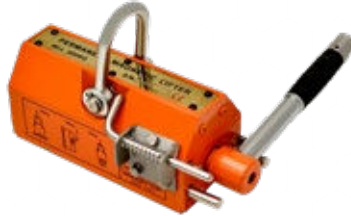
CODE: PL300



Max Breakaway:	900 kg
Safe Working Load:	300 kg
Full Saturation Thickness:	40 mm
Max Safe Shear:	N/A
Min. Thickness for De-stack:	40 mm
Net Weight:	10 kg

PRO-LIFT LIFTING MAGNET 500KG

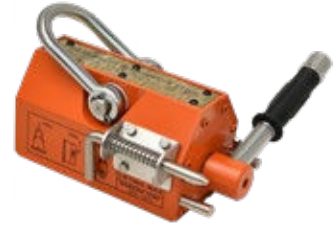
CODE: PL500



Max Breakaway:	1500 kg
Safe Working Load:	500 kg
Full Saturation Thickness:	40 mm
Max Safe Shear:	N/A
Min. Thickness for De-stack:	40 mm
Net Weight:	12.5 kg

PRO-LIFT LIFTING MAGNET 600KG

CODE: PL600



Max Breakaway:	1800 kg
Safe Working Load:	600 kg
Full Saturation Thickness:	50 mm
Max Safe Shear:	N/A
Min. Thickness for De-stack:	50 mm
Net Weight:	20 kg

PRO-LIFT LIFTING MAGNET 1000KG

CODE: PL1000



Max Breakaway:	3000 kg
Safe Working Load:	1000 kg
Full Saturation Thickness:	60 mm
Max Safe Shear:	N/A
Min. Thickness for De-stack:	60 mm
Net Weight:	53 kg

PRO-LIFT LIFTING MAGNET 2000KG

CODE: PL2000



Max Breakaway:	6000 kg
Safe Working Load:	2000 kg
Full Saturation Thickness:	70 mm
Max Safe Shear:	N/A
Min. Thickness for De-stack:	70 mm
Net Weight:	80 kg

PRO-LIFT LIFTING MAGNET 3000KG

CODE: PL3000



Max Breakaway:	9000 kg
Safe Working Load:	3000 kg
Full Saturation Thickness:	80 mm
Max Safe Shear:	N/A
Min. Thickness for De-stack:	80 mm
Net Weight:	160 kg

Magswitch MLAY Lifting Magnets

MLAY600 LIFTING MAGNET

CODE: 810089



Max Breakaway:	272 kg
Safe Working Load:	90 kg
Full Saturation Thickness:	9.5 mm
Max Safe Shear:	31.8 kg
Min. Thickness for De-stack:	9.5 mm
Net Weight:	2.0 kg

MLAY600X2 LIFTING MAGNET

CODE: 8100360



Max Breakaway:	500 kg
Safe Working Load:	167 kg
Full Saturation Thickness:	9.5 mm
Max Safe Shear:	90.9 kg
Min. Thickness for De-stack:	9.5 mm
Net Weight:	4.3 kg

MLAY600X4 LIFTING MAGNET

CODE: 8100364



Max Breakaway:	1036 kg
Safe Working Load:	346 kg
Full Saturation Thickness:	9.5 mm
Max Safe Shear:	150 kg
Min. Thickness for De-stack:	9.5 mm
Net Weight:	8.1 kg

MLAY 1000 LIFTING MAGNET

CODE: 8100088



Max Breakaway:	454 kg
Safe Working Load:	151 kg
Full Saturation Thickness:	12.7 mm
Max Safe Shear:	22.7 kg
Min. Thickness for De-stack:	12.7 mm
Net Weight:	15.2 kg

Magswitch MLAY Lifting Magnets

MLAY 1000X2 LIFTING MAGNET

CODE: 8100484



Max Breakaway:	907 kg
Safe Working Load:	303 kg
Full Saturation Thickness:	12.7 mm
Max Safe Shear:	57 kg
Min. Thickness for De-stack:	19.1 mm
Net Weight:	10.8 kg

MLAY 1000X3 LIFTING MAGNET

CODE: 8100403



Max Breakaway:	1242 kg
Safe Working Load:	414 kg
Full Saturation Thickness:	12.7 mm
Max Safe Shear:	90 kg
Min. Thickness for De-stack:	12.7 mm
Net Weight:	16.6 kg

MLAY 1000X4 LIFTING MAGNET

CODE: 8100418



Max Breakaway:	1654 kg
Safe Working Load:	551 kg
Full Saturation Thickness:	19.05 mm
Max Safe Shear:	128.6 kg
Min. Thickness for De-stack:	19.05 mm
Net Weight:	20.5 kg

Magswitch CE Magnetic Lifters

CE 1100 MAGNETIC LIFTER

CODE: 8140977

Max Breakaway:	1500 kg
Breakaway force @ 3:1 SWL:	500 kg
Net Weight:	25 kg



CE 2100 MAGNETIC LIFTER

CODE: 8140978

Max Breakaway:	2850 kg
Breakaway force @ 3:1 SWL:	950 kg
Net Weight:	41 kg



Magswitch CE Magnetic Lifters

CE 6600 MAGNETIC LIFTER

CODE: 8140979

Max Breakaway:	9000 kg
Breakaway force @ 3:1 SWL:	3000 kg
Net Weight:	190 kg



CE 6600 MAGNETIC LIFTER





MSA
CABLE SAFETY RANGE

MSA Cable Safety Range

FRAS CABLE-MATE

CODE: MSAFRCM 10

Supports Weight: 25 kg (±5%)

Dimensions: 100 x 220 mm



CABLE-MATE

CODE: MSACM 10

Supports Weight: 25 kg (±5%)

Dimensions: 120 x 250 mm



CABLE-BUDDY

CODE: MSACB 10

Supports Weight: 5 kg (±5%)

Dimensions: 30 x 120 mm



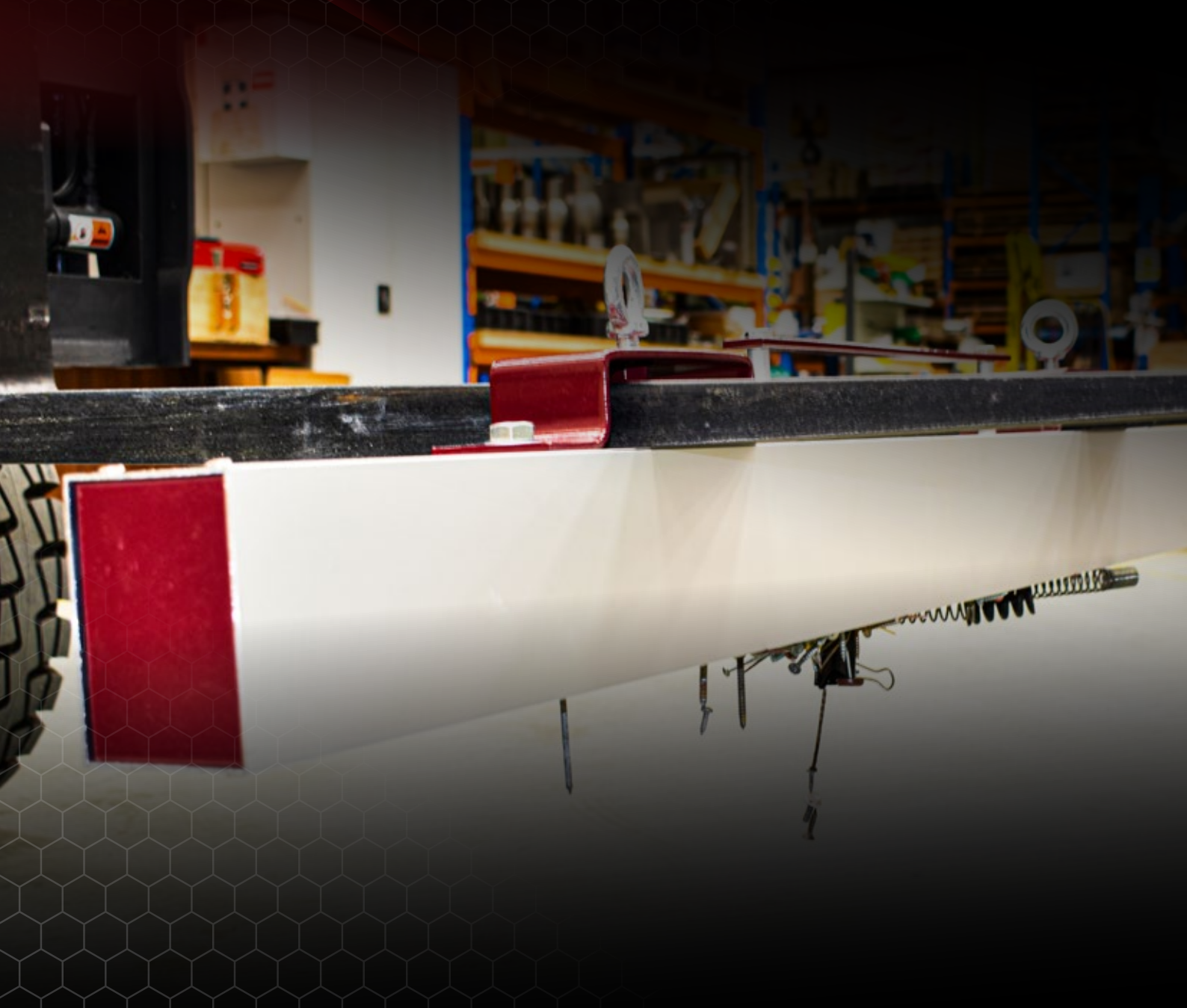
POWR-SAFE

CODE: MSAPS 10

Supports Weight: 12 kg (±5%)

Dimensions: 88 Ø x 125 mm





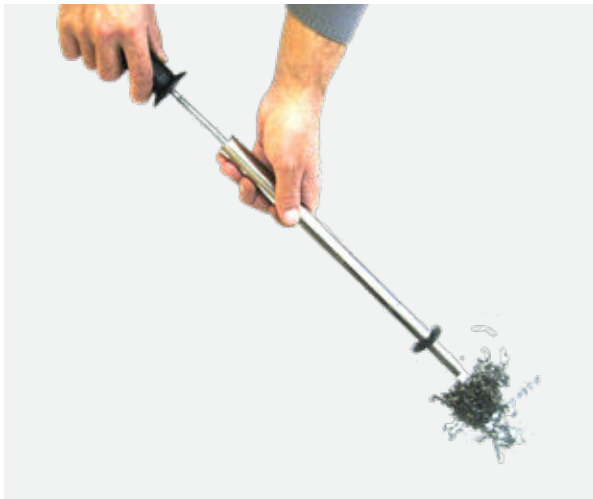
**MSA MAGNETIC
WORKSHOP
CLEAN-UP RANGE**

MSA Magnetic Workshop Wands

MAGNETIC WORKSHOP WAND 350MM LONG

CODE: MSAWW350

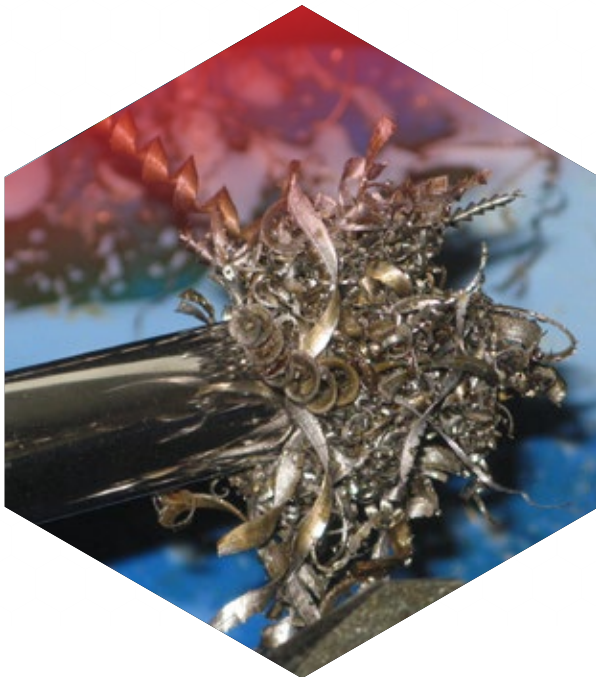
Length: 350 mm
Diameter: 25 mm



MAGNETIC WORKSHOP WAND 900MM LONG

CODE: MSAWW900

Length: 900 mm
Diameter: 25 mm



MSA Magnetic Super Sweepers

SUPER SWEEPER - 18"

CODE: MSASS18



SUPER SWEEPER - 24"

CODE: MSASS24



Width: **457.20 mm**
 Height: **850 – 1200 mm with adjustable handle**
 Box Dimensions: **780L x 220W x 220H mm**
 Box Weight: **7 kg**

Width: **609.20 mm**
 Height: **850 – 1200 mm with adjustable handle**
 Box Dimensions: **870L x 220W x 220H mm**
 Box Weight: **7 kg**

MSA Magnetic Forklift Sweepers

FORKLIFT SWEEPER - 36"

CODE: MSAFS36



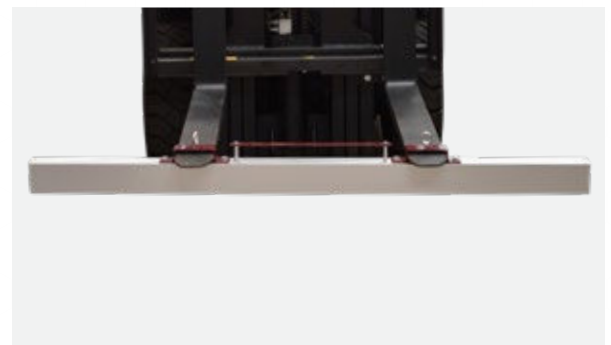
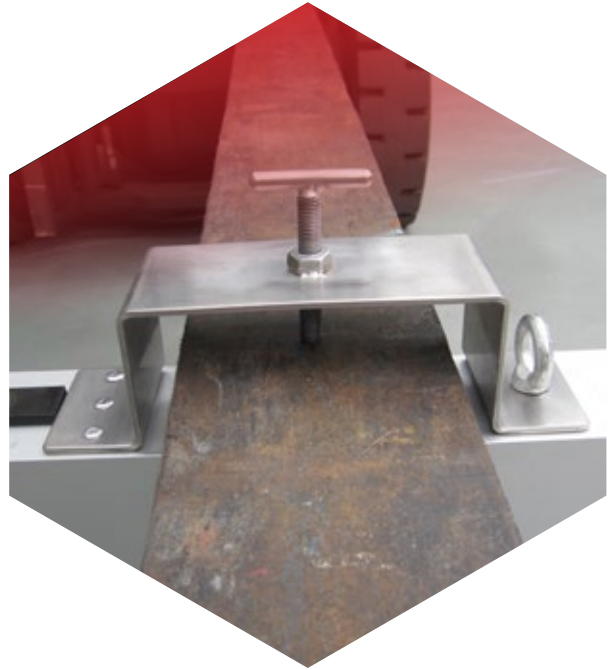
Product Dimension: **914.4W x 160H mm**

Box Dimensions: **960L x 130W x 230H mm**

Box Weight: **8 kg**

FORKLIFT SWEEPER - 72"

CODE: MSAFS72



Product Dimension: **1828.8W x 160H mm**

Box Dimensions: **1850L x 130W x 230H mm**

Box Weight: **15 kg**



MSA
WELDING TORCH
HOLDERS

MSA Welding Torch Holders

MIG-MATE

CODE: MSAMIGM

Height: 130 mm

Weight: 763 g

Magnetic Base: Ø 88 mm



TIG-MATE

CODE: MSATIGM

Height: 185 mm

Weight: 723 g

Magnetic Base: Ø 88 mm





MSA MAGNETICS

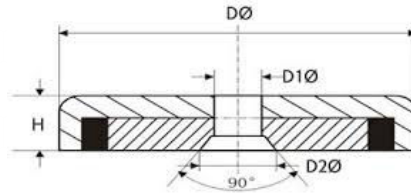


MSA
GRIP GRAB
POT MAGNETS

HIGH GRADE NEODYMIUM

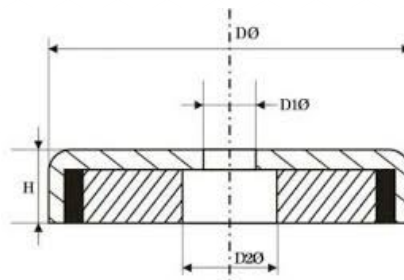
The Strongest Magnet Found in Nature!

A-Series - CSK Centre Hole



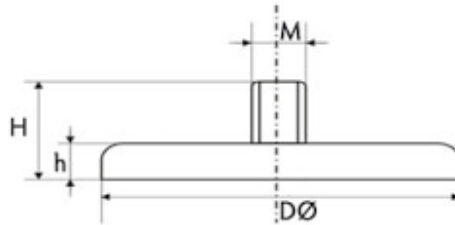
Part#	D (mm)	D1 (mm)	D2 (mm)	H (mm)	Attraction (kg)	DeadWeight (g)
MSAA16	16	3.5	6.5	5	5	7
MSAA20	20	4.5	8.5	7	6	13
MSAA25	25	5.5	10.4	8	14	23
MSAA32	32	5.5	10.4	8	25	39
MSAA36	36	6.5	12	9	29	52
MSAA42	42	6.5	12	9	37	76
MSAA48	48	8.5	16	11.5	68	120
MSAA60	60	8.5	16	15	112	252
MSAA75	75	10.5	19	18	162	488

B-Series - Straight Hole



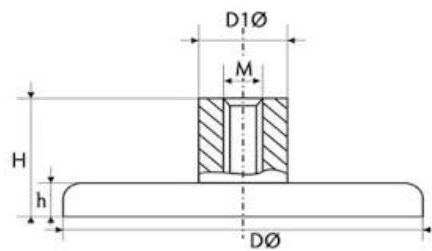
Part#	D (mm)	D1 (mm)	D2 (mm)	H (mm)	Attraction (kg)	DeadWeight (g)
MSAB16	16	3.5	6.5	5	4	6
MSAB20	20	4.5	8	7	6	12
MSAB25	25	5.5	9	8	14	23
MSAB32	32	5.5	9	8	23	36
MSAB36	36	6.5	11	9	29	50
MSAB42	42	6.5	11	9	32	73
MSAB48	48	8.5	15	11.5	63	114
MSAB60	60	8.5	15	15	95	240
MSAB75	75	10.5	18	18	155	471
MSAB88	88	12.5	20	20	180	480

C-Series - Male Thread



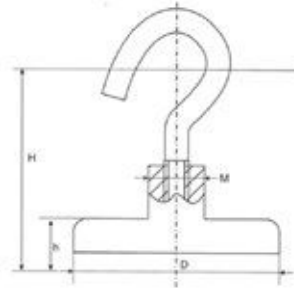
Part#	D (mm)	D1 (mm)	D2 (mm)	H (mm)	Attraction (kg)	DeadWeight (g)
MSAC10	10	3	12	5	2.2	3.5
MSAC16	16	4	13	5	5.5	7.5
MSAC20	20	4	15	7	9	16
MSAC25	25	5	17	8	22	30
MSAC32	32	6	18	8	34	45
MSAC36	36	6	18	8	41	57
MSAC42	42	6 or 8	20	9	68	84
MSAC48	48	8	24	11.5	81	130
MSAC60	60	8	30	15	113	254
MSAC75	75	10	34	15	164	550

D-Series - Female Threaded Boss



Part#	D (mm)	D1 (mm)	D2 (mm)	H (mm)	Attraction (kg)	DeadWeight (g)
MSAD10	10	3	12	5	2.2	3.5
MSAD16	16	4	13	5	5.5	8
MSAD20	20	4	15	7	9	17
MSAD25	25	5	17	8	22	32
MSAD32	32	6	18	8	34	47
MSAD36	36	6	18	8	41	59
MSAD42	42	6	20	9	68	87
MSAD48	48	8	24	11.5	81	132
MSAD60	60	8	30	15	113	270
MSAD75	75	10	34	18	164	552

E-Series - Complete with Hook



Part#	D (mm)	D1 (mm)	D2 (mm)	H (mm)	Attraction (kg)	DeadWeight (g)
MSAE16	16	4	14	5	5.5	11
MSAE20	20	4	14	7	9	21
MSAE25	25	5	17	8	22	32
MSAE32	32	6	16	8	34	56
MSAE36	36	6	16	8	41	68
MSAE42	42	6	16	9	68	97
MSAE48	48	8	23	11.5	81	154
MSAE60	60	8	23	15	113	282
MSAE75	75	10	25	18	164	560



MSA MAGNETICS

Head Office

4 Prince of Wales Ave,
Unanderra NSW 2526

1800 466 246

sales@msamagnetics.com.au

www.msamagnetics.com.au

ABN 59 171 188 983

YOUR SOURCE FOR FORCE